

Installing Domestic Hot Water Coil

Side Exit:

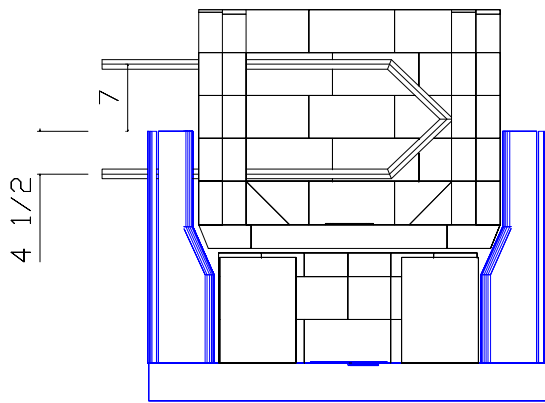


Figure 1. Front View

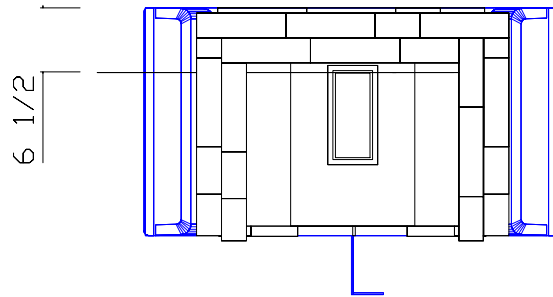


Figure 2. Top View

Water coil location. Cut notches into lower and middle heat exchange channels where shown. Install coil while building firebox (it won't fit in afterwards). Leave slots in firebricks sidewalls a little oversize, and patch with KS-4 patching compound (supplied)

Rear Exit

Rear exit installation is similar. A different coil is required, and the side channels don't require cutting. Also, the rear exit coil can be fitted after the heater core is built. Simply leave the required slots in the firebox back wall, near the left or right corner. Use the same heights as indicated above.